

**ReBUILD Deconstruction** has been in operation since 2001 and is equipped for full house deconstruction, interior softstrips and anything in between. As a Certified Lead Safe Firm, ReBUILD's Deconstruction crew has received training to safely work in homes built before 1978 that are likely to have lead paint in them.

Customers will not need to worry about lead dust (during deconstruction) contaminating their home. ReBUILD Deconstruction closely follows the EPA's Lead Safe Work Practices, completely isolating the work area from the rest of the home to prevent any dust from migrating to other areas of the home. Choosing deconstruction helps to keep more waste out of our landfills. An average home (approximately 2,000 square feet), when demolished, can produce about 10,000 cubic feet of landfill debris.



#### FULL HOUSE DECONSTRUCTION

ReBUILD's Deconstruction Crew disassembles residential and small commercial buildings throughout Vermont, assisting building owners in donating reusable material from these jobs to ReBUILD's Building Material Store, a tax exempt 501(c)(3) nonprofit organization. ReBUILD Building Material Store then sells the materials at substantially reduced prices to the general public, remodeling companies, property managers, landlords, and homeowners for their building and renovation needs.

In the process of deconstructing a building, ReBUILD Deconstruction seeks to:

- recycle or reclaim for reuse approximately 80% of the structure
- enable the donors to earn a significant tax deduction for their donations
- save the property owner expensive debris hauling and disposal costs
- provide trade skills and permanent employment for hard to-place workers.



**ReBUILD Deconstruction Service**  
 802.846.4007 • [info@rebuildvt.org](mailto:info@rebuildvt.org)  
[www.resourcevt.org](http://www.resourcevt.org)  
**CALL TODAY FOR A FREE ESTIMATE!**

**BUILDING Material Store**  
 To learn more about ReBUILD's Building Material Retail Store, visit us at 339 Pine St. in Burlington, or call 802.846.4015



266 Pine Street • Burlington, VT • 05401  
 t: 802.658.4143 / f: 802.658.0543  
[www.resourcevt.org](http://www.resourcevt.org)

ReSOURCE's mission is to:

- protect the environment by reducing the amount of reusable and repairable items dumped in landfills
- give individuals in transition valuable job skills, technical training and more opportunity
- alleviate the effects of poverty by making vital household goods and building materials available to the poor



Member since 2008



#### DECONSTRUCTION SERVICE

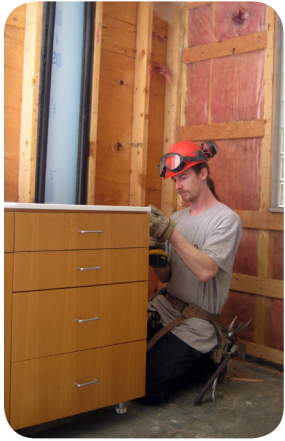


- Full house deconstruction
- Interior softstrip deconstruction
- Competitive pricing
- Tax-deductable
- Professional, experienced crew
- Environmentally viable alternative to demolition



**802.846.4007 | [www.resourcevt.org](http://www.resourcevt.org)**

## INTERIOR SOFTSTRIP DECONSTRUCTION



ReBUILD Deconstruction provides general soft strip services, which usually involves the removal of household fixtures, fittings, temporary structures, windows, oil tanks, kitchen cabinets, bathroom etc. to leave an “empty shell” prior to refurbishment. If you are planning a renovation, redesign, or simply need to replace something old with something new, ReBUILD can do the job quickly, cleanly, and professionally.

### THE BENEFITS OF DECONSTRUCTION:

- Generates substantial tax deductions for the property owner
- Makes available used building materials at greatly reduced prices to homeowners, remodelers, landlords, and property management companies
- Reduces need for construction & demolition (C&D) landfill space
- Saves natural resources and embodied energy contained inherent in the reclaimed materials
- Reduces greenhouse gas emissions
- Creates new, stable jobs in an growing “green collar” industry
- Provides ReBUILD Building Material Store, with an ongoing stream of reclaimed build materials to sell that generates revenue for our mission
- Is both environmentally friendly and cost-competitive with traditional demolition



***“The crew arrived smiling, energetic, and ready to work. They rolled up their sleeves, moved quickly, and did a great job.” - Steve, Home owner***

### KNOWING IF YOUR HOUSE OR BUILDING IS APPROPRIATE FOR DECONSTRUCTION?

In general, buildings exhibiting one or more of the following characteristics are likely to be good deconstruction candidates:

- Wood-framed with heavy-timbers and beams, or with unique woods such as Douglas fir, American chestnut, and old growth southern yellow pine;
- Constructed with high-value materials such as hardwood flooring, multi-paned windows, architectural molding, and unique doors or plumbing/electrical fixtures;
- Constructed with high-quality brick laid with low-quality mortar (to allow relatively easy break-up and cleaning); or
- Structurally sound, i.e, generally weather-tight to minimize rotted and decayed materials.

### WHAT TYPES OF MATERIALS CAN BE SALVAGED AND REUSED THROUGH DECONSTRUCTION?

- Wood beams, joists, studs, baseboards
- Cabinets
- Cupboards
- Railings
- Brick
- Doors & casings
- Windows
- Bathroom fixtures
- Light fixtures
- Furnishings



### ReBUILD Building Material Store

339 Pine Street • Burlington

Homeowners, tenants, contractors, artisans, and developers all shop at ReBUILD's Building Material Store for a variety of materials, including lumber, plywood, windows, doors, sinks, lighting, architectural antiques, and other materials.

ReBUILD's Building Material Store closes the loop for the building material reuse industry by providing an outlet for hundreds of tons of waste that homeowners and contractors have no other way to reuse or recycle.

Each year, through our ReLIEF program, the Building Material Store relieves poverty by donating materials to nonprofits throughout Vermont. In addition, the Building Material Store store diverts materials from the landfill and supports job skills training.

### DONATE USED BUILDING MATERIALS

Are you planning to do a renovation this spring? You can donate used building and construction materials to ReBUILD's Building Material Store! By donating salvaged materials, you will save money on disposal fees for reusable items that you might otherwise throw away, and you will earn a charitable tax deduction for the value of your materials.

#### Items most commonly accepted include:

- Modular cabinets (kitchen or bath)
- Doors
- Lighting fixtures
- Sinks (kitchen and bathroom)
- Toilets
- Windows
- Lumber

For an updated list of acceptance guidelines, visit [www.resourcevt.org](http://www.resourcevt.org)

***“ReBUILD has been a ‘GO TO’ subcontractor for years on many of our renovation projects. They offer a fantastic service at a great value, that is reliable. We feel fortunate to have this resource available in our industry—they save us time, save client’s money and successfully divert waste from landfills.” - Chris Quinn, Red House Inc.***